



GMT MONTHLY MEMBERSHIP PROGRESS REPORT

Results as of: 2/29/2020

Multiple District 23

LOCATION: CONNECTICUT

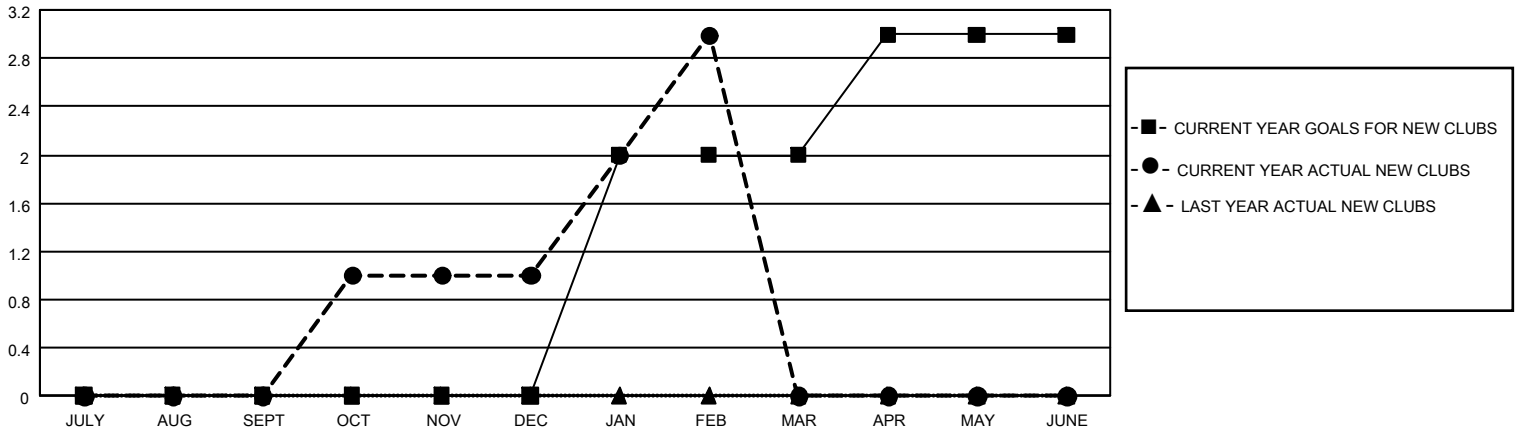
GMT: OPEN

GMT CA 1

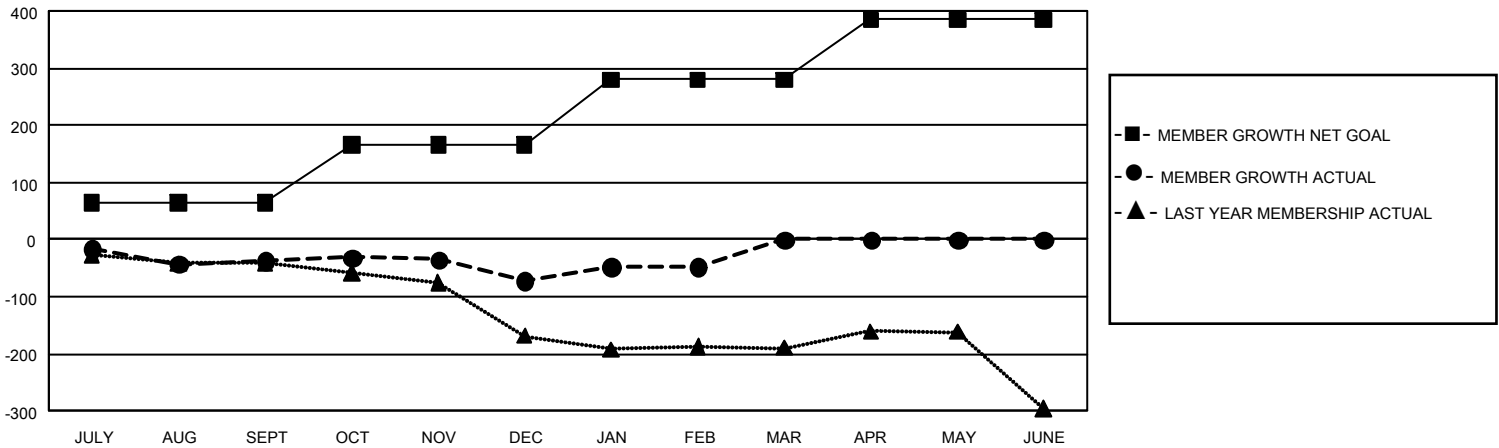
Clubs			
RESULTS FOR 2019-2020			
QUARTER	NEW CLUB GOAL	NEW CLUBS	DROPPED CLUBS
JULY/AUG/SEPT	0	0	1
OCT/NOV/DEC	0	1	1
JAN/FEB/MAR	6	2	1
APR/MAY/JUNE	3	0	0

Members			
RESULTS FOR 2019-2020			
QUARTER	MEMBER GROWTH NET GOAL	MEMBER GROWTH ACTUAL	DROPPED MEMBERS ACTUAL (including transfers)
JULY/AUG/SEPT	195	76	108
OCT/NOV/DEC	300	116	146
JAN/FEB/MAR	345	126	96
APR/MAY/JUNE	315	0	0

GOALS AND ACTUAL NEW CLUBS CUMULATIVE



GOALS AND ACTUAL MEMBERS CUMULATIVE



DROPPED CLUBS: 3

86 CLUBS OF 160 ADDED 1 OR MORE NEW MEMBERS

GENDER DISTRIBUTION

MALE 3,093 (64.79%)
FEMALE 1,681 (35.21%)

DROPPED MEMBERS

DECEASED	40
CLUB CANCELLED	8
OTHER	302
TOTAL	350

[CLICK HERE FOR CUMULATIVE MEMBERSHIP DATA](#)

TOTAL FAMILY UNIT MEMBERS	850
FAMILY MEMBERS PAYING HALF DUES	438